

# I'm looking for ~?

A: Excuse me. I'm looking for Kocho Sensei's house.

B: Pardon me?

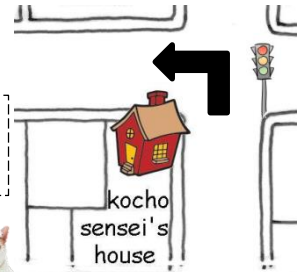
A: Kocho Sensei's house.

B: Ok. Go down this street.

Turn left at that corner. It's on the left.

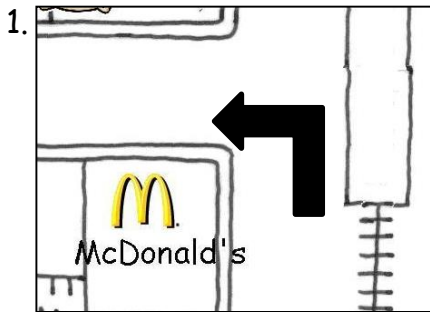
\* I'm looking for ~ = How can I get to ~?

\* Go down ~ = Go straight.

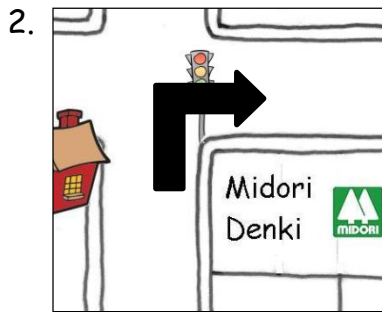


## Role Play!

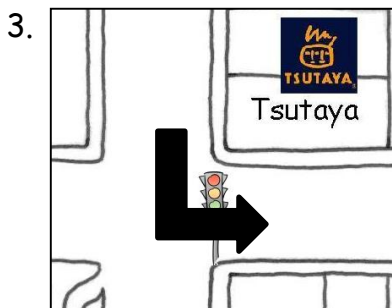
Do the role play.



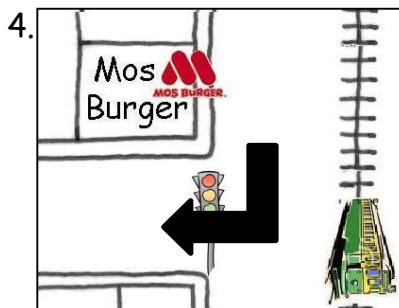
at that corner  
on the left



at the 1<sup>st</sup> traffic light  
on the right

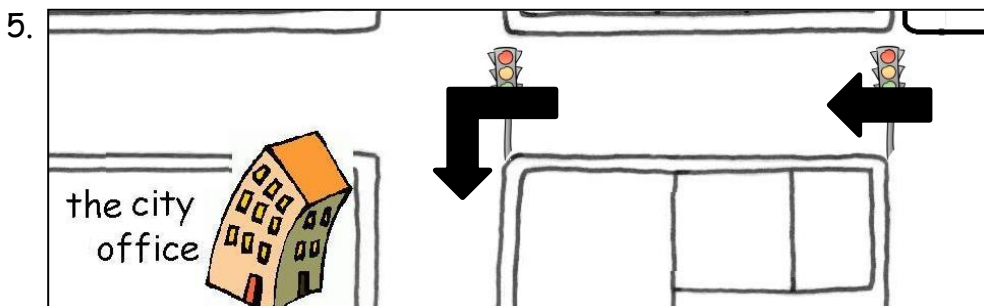


at the 1<sup>st</sup> traffic light  
on the left



at the 1<sup>st</sup> traffic light  
on the right

Go down this street.  
 ~ at that corner.  
 Turn right/left.  
 ~ on the right/left.  
 ~ at the  
 1<sup>st</sup> traffic light.



at the 2<sup>nd</sup> traffic light  
on the right

# Listening Activity!

Start from the train station. Write 1~10 in the box.

Soft bank

Mos Burger

the zoo

the city office

the shopping center

Tsutaya

the book store

Docomo

the park

McDonald's

the super market

the post office

kocho sensei's house

Midori Denki

Start

the train station

Where are they? They are ~.



# Writing!

## Example:

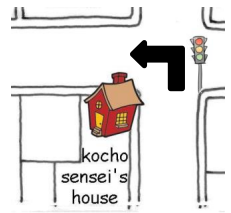
Excuse me. I'm looking for Kocho Sensei's house.

Ok. Go down this street.

Turn left at that corner. It's on the left.

\* How can I get to ~?

\* Go straight.

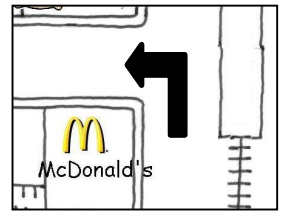


1.

\_\_\_\_\_

\_\_\_\_\_

\_\_\_\_\_

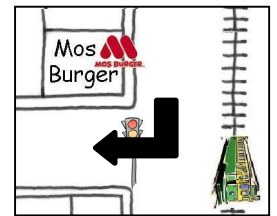


2.

\_\_\_\_\_

\_\_\_\_\_

\_\_\_\_\_



3.

\_\_\_\_\_

\_\_\_\_\_

\_\_\_\_\_

