

I'm looking for ~?

A: Excuse me. I'm looking for Kocho Sensei's house.

B: Pardon me?

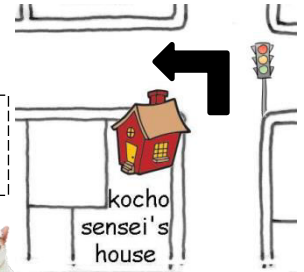
A: Kocho Sensei's house.

B: Ok. Go down this street.

Turn left at that corner. It's on the left.

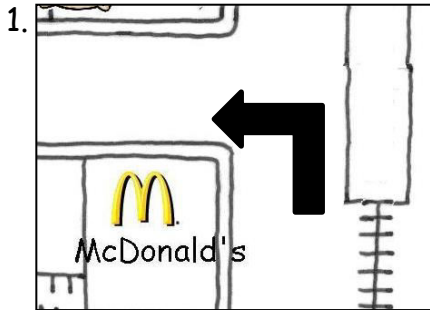
* I'm looking for ~ = How can I get to ~?

* Go down ~ = Go straight.

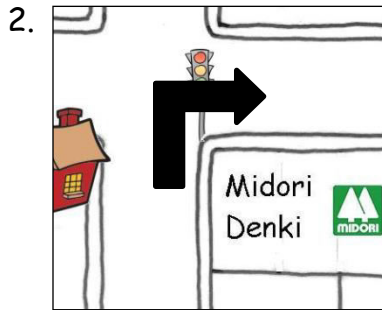


Role Play!

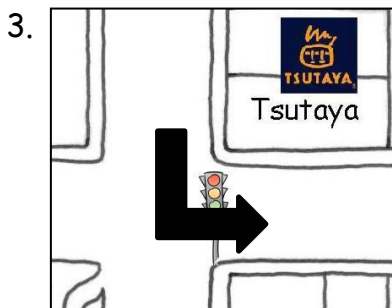
Do the role play.



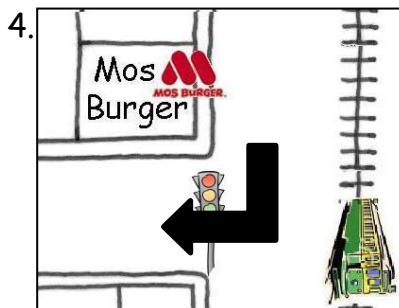
at that corner
on the left



at the 1st traffic light
on the right

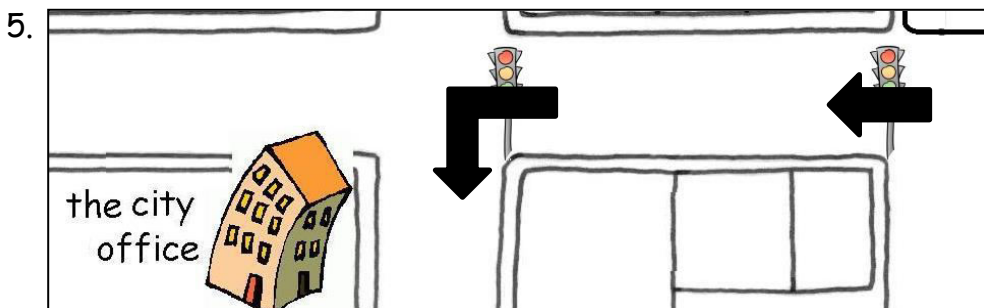


at the 1st traffic light
on the left



at the 1st traffic light
on the right

Go down this street.
 ~ at that corner.
 Turn right/left.
 ~ on the right/left.
 ~ at the
 1st traffic light.



at the 2nd traffic light
on the right

Listening Activity!

Start from *the train station*. Write 1~10 in the box.



Soft bank

Mos Burger

the city office

the zoo

Tsutaya

the book store

the shopping center

Docomo

the train station Start

the park

McDonald's

the super market

the post office

kocho sensei's house

Midori Denki

Where are they? They are ~.



Writing!

Example:

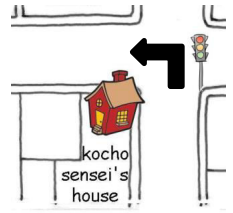
Excuse me. I'm looking for Kocho Sensei's house.

Ok. Go down this street.

Turn left at that corner. It's on the left.

* How can I get to ~?

* Go straight.

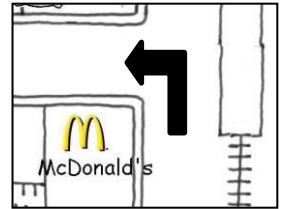


1.

_____.

_____.

_____.

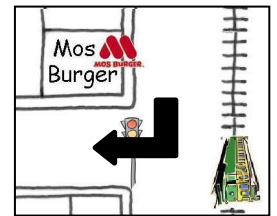


2.

_____.

_____.

_____.



3.

_____.

_____.

_____.

