

## When can you ~?

### Role Play!

A: **When** can you eat an orange?

B: I can eat an orange in winter.



Write your answer. Then, do the role play.

1. When can you eat a watermelon?

---

2. When can you eat nabe?

---

3. When can you go swimming?

---

4. When can you see the cherry blossom?

---

5. When can you go skiing?

---

6. When can you do rice planting?

---

7. When can you see the fireworks?

---

8. When can you get tsukimi burger?

---

spring

summer

fall

winter

# You can ~ in spring.

## Practice!



A: 「**When** can I see the cherry blossom?

B: You can see it in spring. It's the best time to see it!

Draw pictures.

Make sentences. Then, do the role play.

### 1. In spring

a. 	b. 
eat	see

\_\_\_\_\_ When can I see the cherry blossom \_\_\_\_\_?

b

### 2. In summer

a.	b.
eat	see

\_\_\_\_\_?

### 3. In fall

a.	b.
eat	see

\_\_\_\_\_?

### 4. In winter

a.	b.
eat	see

Write the answer. \_\_\_\_\_?

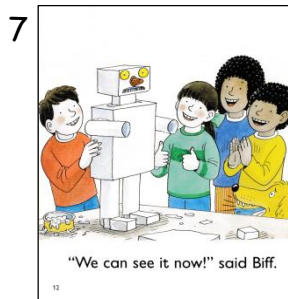
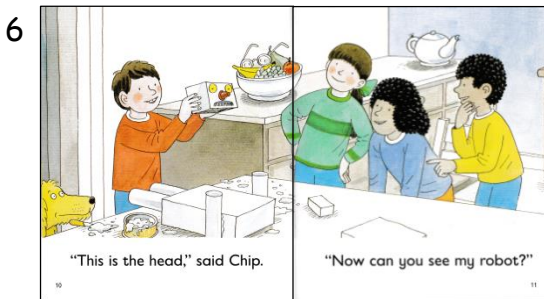
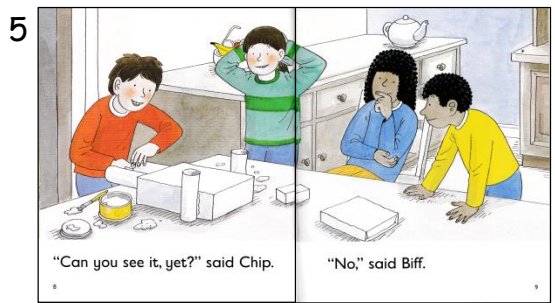
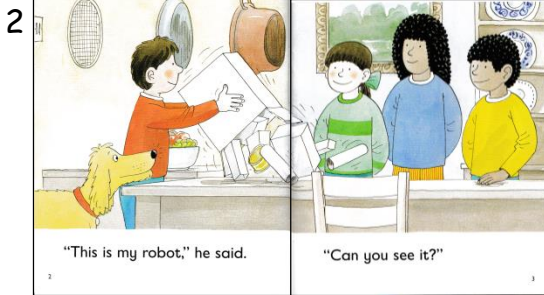
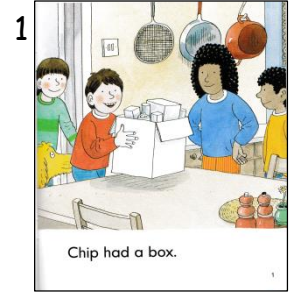
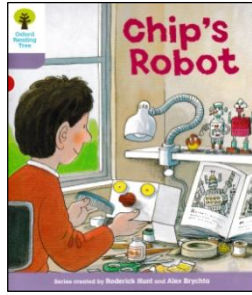
1	2	3	4



# Read a book!



Start a Reading Program at your school!



## Write a book report!



1. What is this story about? (In Japanese with furigana)

---



---

## Q & A Quiz!

1. Chip can make a robot. When can his friends see it?




---